

Houses within commuting distance of London



▼ **Hertfordshire:** The White House, Commonwood, Kings Langley. A characterful home in beautiful Green Belt surroundings just 3.5 miles from Kings Langley, which has half-hourly trains to Euston (22 mins). 4 beds, 3 baths, breakfast/kitchen, 2 receps, cellar, balcony, study, pretty gardens. £749,950; Robsons (01923-820622).

▲ **West Sussex:** The North Wing, Brook House, Ardingly. A major portion of this lovely mansion, in a tranquil setting not far from Haywards Heath (45 mins to London Bridge/Victoria). 5 beds, family bath, kitchen, 2 large receps, cellars, private garden, shared gardens. £799,900; Chesterton Humberts (01342-326326).



◀ **Kent:** Wexford Cottage, Brook, nr Ashford. A recently extended 17th century cottage in a quiet village at the foot of the North Downs – an Area of Outstanding Natural Beauty – not far from Ashford International (37 mins to St Pancras). 3 beds, family bath, shower, breakfast/kitchen, 2 receps, family room/bed 4, double garage, parking, large garden, 0.5 acres. £545,000; FoxWood Maclean (01233-812060).



▲ **Hampshire:** Cannon Cottage, Old Basing. A pretty Grade II thatched cottage in the centre of this conservation village, 3 miles from Basingstoke (45 mins to Waterloo). 5 beds, 2 baths, shower, breakfast/kitchen, 3 receps, hall, utility, double garage, lovely gardens, 0.44 acres. £745,000; Knight Frank (01256-350600).

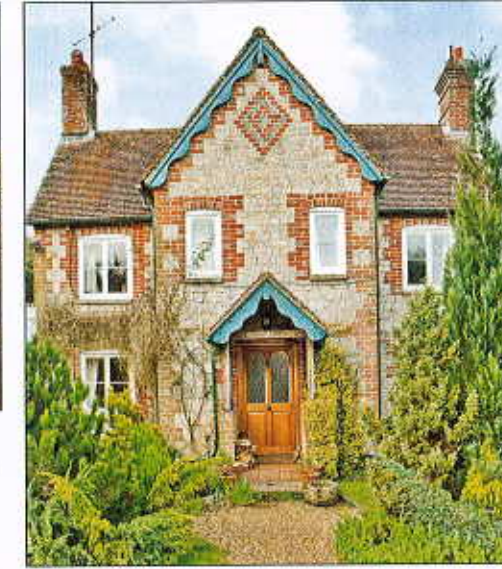


► **Kent:** 24-26 High Street, Chipstead, nr Sevenoaks. A quaint Grade II house in this sought-after village just 1.5 miles from Sevenoaks (28 mins to London Bridge). 2 bed suites, 2 further beds, family bath, breakfast/kitchen, 3 receps, utility, study, boot room, courtyard garden, outbuilding. £799,995; Chesterton Humberts (01732-741212).



▲ **Berkshire:** Old Rectory Cottage, Theale. A fine Grade II former coach house not far from the M4 and Reading (28 mins to Paddington). 2 beds, family bath, kitchen, 2 receps, conservatory, garden, summerhouse. £650,000; Sara Batting (0118-950 2341).

► **Hampshire:** The Gardeners Cottage, Borden Wood, Milland. A stone cottage just 5.5 miles from the A3 and Liphook (1 hr 4 mins to Waterloo). 3 beds, family bath, kitchen, 3 receps, utility, garden, office. OIEO £700,000; Savills (01483-796820).



▲ **Hertfordshire:** 182 London Road, St Albans. A beautifully presented Grade II Georgian townhouse only half a mile from St Albans station (18 mins to St Pancras). 5 beds, family bath, shower, kitchen, breakfast room, 3 receps, study, utility, garden, garage, private parking. £935,000; Strutt & Parker (01727-840285).



◀ **Bedfordshire:** Old Priory House, Beadlow. This 17th century timber-framed house is a 15-minute drive from Arlesey (35 mins to Kings Cross). 5 beds, 3 baths, kitchen, 4 receps, utility, 2 attic rooms, conservatory, garage, stables, garden, paddock, 1 acre. £835,000; Jackson-Stops & Staff (01525-290641).

▲ **Kent:** Mulberry House, Mersham. A lovely Grade II house in a rural setting within easy reach of Ashford International (37 mins to St Pancras). 4 beds, family bath, shower, kitchen, 3 receps, stables, manège, garden, 1.5 acres. £665,000; FoxWood Maclean (01233-812060).